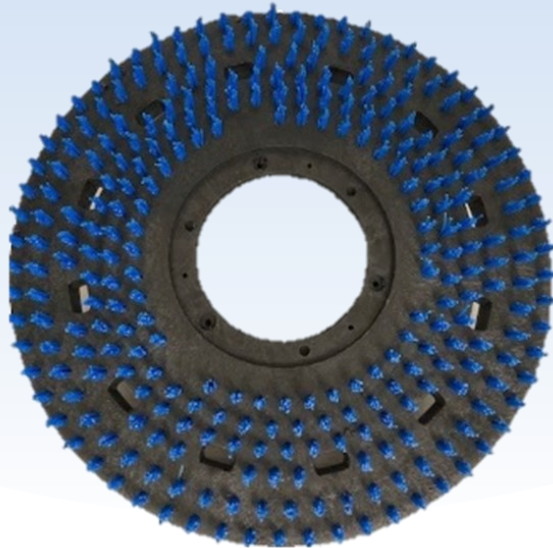




BETTER BRUSH

PRODUCTS



We're Better. Clean & Simple.

BetterBrushProducts.com

Rotary Catalog

ROTARY SELECTION GUIDE

How to select the correct Better Brush Rotary product:

Brushes are sized 2" less than the machine, allowing the brush to clear the apron/shroud of the machine and any bristle flair caused by the normal use of the brush.

Pad Drivers are sized 1" less than the machine. The short trim style is built with a molded-in 1 ½" riser.

We offer a full range of bristle choices ranging from soft to stiff and everything in between of nylon, polypropylene, wire, grit, and natural fibers.

When determining bristle types consider the following factors: speed, down pressure, choice of chemicals to be used, soil level and floor conditions.

The following chart is a helpful guide that shows types of bristles typically used on the described floors.

Better Brush is not responsible for damage when the wrong product is used for the application.

STRIPPING	46 Grit	80 Grit	120 Grit	180 Grit	500 Grit	Nylon Carpet Brush	.030 Poly or Nylon	Poly Carpet Brush	.020 Poly or Nylon	Wire	Bassine	Union	Tampico	Sandpaper Driver
Terrazzo	X	X												
Vinyl Tile		X												
Ceramic / Quarry Tile		X												
Linoleum		X												
Scarifying Concrete										X				
Wood Floors														X
SCRUBBING	46 Grit	80 Grit	120 Grit	180 Grit	500 Grit	Nylon Carpet Brush	.030 Poly or Nylon	Poly Carpet Brush	.020 Poly or Nylon	Wire	Bassine	Union	Tampico	Sandpaper Driver
Heavily Soiled Concrete	X	X		X			X			X	X			
Moderate to Lightly Soiled Concrete			X	X			X			X	X			
Vinyl Tile			X	X	X		X				X			
LVT					X		X							
Terrazzo			X	X	X		X				X			
Ceramic / Quarry Tile			X	X	X		X				X			
Linoleum			X	X	X		X				X			
Raised Disc Rubber Tile			X		X				X					
Non-Slip Epoxy Finish			X		X		X							
Carpet Scrubbing						X		X	X					
HARD SURFACE POLISHING	46 Grit	80 Grit	120 Grit	180 Grit	500 Grit	Nylon Carpet Brush	.030 Poly or Nylon	Poly Carpet Brush	.020 Poly or Nylon	Wire	Bassine	Union	Tampico	Sandpaper Driver
Raised Disc Rubber												X	X	
Marble or Tile												X	X	
Linoleum / Vinyl Tile												X	X	

NYLON GRIT ROTARY BRUSHES

Nylon grit brushes are effective, convenient and economically sound replacements for disposable pads, often lasting more than 100 times longer without clogging. As the grit number increases, the brush gets softer. Silicon carbide grit is impregnated into the nylon filament at the point of extrusion, making it part of the bristle. The result is effective cleaning with a longer brush life. All grit brushes are to be used wet. Trim length 1-3/4".

46 GRIT Rotary Brush

Purple, extra stiff, .065" bristle diameter. For stripping heavily soiled floors. Also used for aggressive scrubbing on unsealed concrete to remove excessive dirt, grease, and compacted soils. More aggressive than black pads. Available in sizes: 10" thru 21"

780110 thru 780121



80 GRIT Rotary Brush

Black, stiff, .050" bristle diameter. For stripping finishes from hard surfaces to scrubbing heavily soiled concrete floors. Great for cleaning wide grout lines. Replaces black or brown pads. Available in sizes: 10" thru 21"

760110 thru 760121



120 GRIT Rotary Brush

Gray, stiff, .040" bristle diameter. For light stripping or daily commercial and janitorial scrubbing on concrete, terrazzo, and tile floors. Replaces green or blue pads. Available in sizes: 10" thru 21"

770110 thru 770121



180 GRIT Rotary Brush

Blue, medium stiffness, .035" bristle diameter. Use for periodic general cleaning. Great for narrow grout lines or uneven surfaces. Replaces blue or red pads. Available in sizes: 10" thru 21"

750110 thru 750121



500 GRIT Rotary Brush

Green, flexible with minimal aggressiveness. .018" bristle diameter. For daily scrubbing on a variety of marble, terrazzo, tile and vinyl floors. Replaces red or white pads. Available in sizes: 10" thru 21"

740110 thru 740121



Abrasive Bristle Choices:

46 Grit: Most aggressive grit scrub brush, used for extra heavy-duty stripping & scrubbing of heaviest soils on the roughest floors. Replaces black pads.

80 Grit: For heavy-duty stripping & commercial scrubbing on concrete, terrazzo and tile floors. Replaces black or brown pads.

120 Grit: For general-duty stripping & scrubbing of concrete, brick, & quarry tile floors. Replaces green or blue pads.

180 Grit: For daily scrubbing of resilient tile & finished floors. Replaces blue or red pads.

500 Grit: For gentle scrubbing & polishing. Replaces red or white pads.

SYNTHETIC BRISTLE BRUSHES

Poly and Nylon Bristle Brushes are designed for convenient cleaning of hard, soft and carpeted floors. Available in longest lasting nylon or economical and reliable polypropylene. Trim length 1-3/4".

Soft Black Nylon

This softer, general-purpose brush is ideal for scrubbing light soils on decorative tile and softer finished floors. Too soft for heavy soils. Light aggressiveness. Longest bristle life. .020" bristles. Available in sizes: 10" thru 21"

660310 thru 660321



Stiff White Nylon

Use long lasting, white nylon for general-purpose scrubbing of medium soils on decorative floors. Nylon will not scratch tile, terrazzo or coated surfaces. Medium aggressiveness. Longest bristle life. .030" bristles. Available in sizes: 10" thru 21"

660210 thru 660221



Nylon Carpet Brush

The outer .030" nylon bristle rows carry the weight of your buffer. The inner .020" nylon bristle rows soften when wet for gentle scrubbing. Available in sizes: 11" thru 21".

Order 1" riser when using the Carpet Glide Plate.

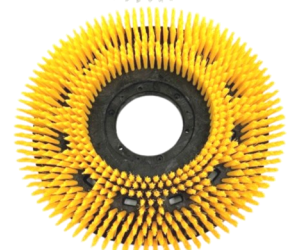
660711 thru 660721



Soft Yellow Poly

Use this softer poly bristle brush with a detergent for lighter-duty scrubbing on waxed or finished floors. Light aggressiveness. Lower cost but shorter bristle life than nylon. Longer life than natural fiber. .020" bristles. Available in sizes: 10" thru 21"

660410 thru 660421



Stiff Blue Poly

Use general-purpose poly to scrub medium soils on concrete and coated floors in commercial and industrial facilities. It has the same medium aggressiveness as stiff nylon. Lower cost but shorter bristle life. .030" bristles. Available in sizes: 10" thru 21"

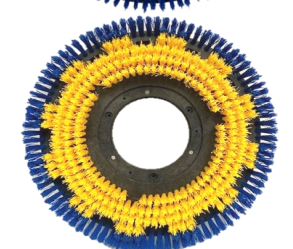
660110 thru 660121



Poly Carpet Brush

Preferred for low nap carpets. More aggressive than nylon. The blue outer .030" rows carry the buffer weight. The yellow, softer inner .020" rows do the scrubbing. Available in sizes 12" thru 20". *Order 1" riser when using the Carpet Glide Plate.*

660612 thru 660621

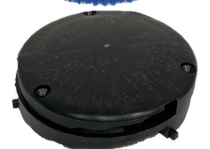


Glide Plate for Carpet Brushes:

The optional, adjustable height plate bolts under the carpet brush and bears part of the buffer weight. Adjust the plate height to fit the scrubbing strength desired.

Must order 1" riser separately.

720508



NATURAL FIBER BRUSHES

Natural fiber bristle brushes scrub and polish hard floors. Trim length 1-3/4".

Bassine Scrub Brush

Black natural bristle brush has traditionally been used for scrubbing and polishing. Bassine is often replaced with longer-life poly or nylon. Low to medium aggressiveness. Available in sizes: 10" thru 21"

600110 thru 600121



Union Mix Brush

This combination of Bassine and Tampico fibers create a soft brush for light scrubbing and polishing of decorative floors. Low cost but shorter bristle life than soft synthetic bristle brushes. Often replaced with a soft poly bristle brush. Low to medium aggressiveness. Available in sizes: 10" thru 21"

610110 thru 610121



Tampico Polishing Brush

Use Tampico for polishing the smoothest waxed floors to a high shine. Do not use on rough or uncoated floors. Tampico can replace a white pad. Lowest aggressiveness. Softest brush for smooth and finished floors. Shorter brush life than soft nylon or soft poly. Available in sizes: 10" thru 21"

690110 thru 690121

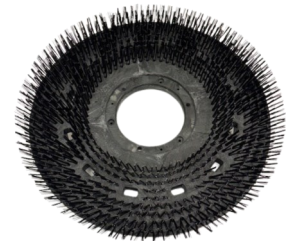


WIRE BRUSHES

Wire Bristle Brush

Use to cut, strip and scrape heaviest soils and old floor finishes. Wire is more aggressive than the heaviest grit brushes. To avoid corrosion and cracking, clean the wire brush after each use and spray bristles with lubricant. Never store the buffer on the wire brush. Highest aggressiveness. Always wear gloves when handling wire brushes. Available in sizes: 11" thru 20"

620111 thru 620120

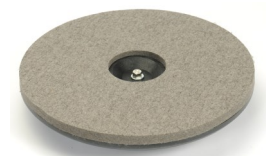


SANDPAPER DRIVER

3/4" thick felt sheet smooths the sandpaper surface, absorbing vibrations and minimizing chatter. Left-handed thread bolt design secures the cone as the machine spins in the clockwise direction. Includes 651005 universal cast aluminum plate. Ideal for sanding wood surfaces.

Replacement cone and left-handed bolt available for special order (#721205).

15"	630315
16"	630316
17"	630317
19"	630319



PAD DRIVERS & ACCESSORIES

Our Pad Drivers are built on the strongest HD plastic blocks on the market. A riser is molded into the block for extra clearance under the buffer apron, letting you use larger pads for greater productivity. The water ring & shower feed holes in the block direct & deliver scrub solution to the floor. Optional Pad Centering devices make pad mounting easier & more accurate. Recommend ordering 1" below the size of the machine.

Short Bristle - 1/2" Trim

Straight, stiff, .040 poly bristles grab and drive pads for fast polishing, buffing, scrubbing and stripping. A 1-1/2" riser is molded into the top of the HD plastic block for extra height, letting you use a larger diameter pad for greater productivity. (Sizes 10", 11" have a 1/4" riser) Available in sizes: 10" thru 21"

630110 thru 630121



Long Bristle - 1" Trim

The long bristle pad driver has the same features as the short version, but uses 1" long, straight, stiff black poly bristles to cushion and drive a pad or carpet bonnet. Order 1" riser separately. Available in sizes: 10" thru 21"

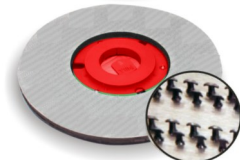
630210 thru 630221



Harpoon Style

A strong plastic sheet with molded harpoons is mechanically bonded to a HD pad driver block with a 1-1/2" riser. The harpoons hold and drive a pad. Access holes in the harpoon sheet are positioned under the shower feed holes in the block, allowing scrub solution to feed through the pad driver onto the floor. Available in sizes: 13" thru 20"

630513 thru 630520



High-Speed Harpoon Style

The high-speed version has the same features as the standard harpoon pad driver, but adds a 1/2" thick foam pad between the pad driver block and the harpoon sheet. This pad absorbs vibrations when a buffer is operating at 300 to 1000 rpm. Available in sizes: 15" thru 20"

630715 thru 630720



Accessories:

The base mounts to the bottom of a pad driver and centers the pad. The clip holds the pad against the pad driver face.

Pad Centering Device Red 720105
Pad Centering Device Tan 720205



720105



720205

A Complete Pad Driver Order:

When ordering a pad driver, be sure to include:

- Pad Driver block size: usually 1" smaller than the size of your buffer.
- Mounting Hardware: clutch plate or lug set
- Optional Pad Centering Device makes pad mounting easier & holds the pad when the buffer is in transit.

Short Bristle pad drivers (sizes 12-21) have a 1-1/2" riser molded into the block.



MOUNTING HARDWARE & ACCESSORIES

Mounting hardware meets or exceeds OEM specifications. Clutch plates fit a 5" center hole in the brush block. Lug sets are factory mounted for correct fit and vibration free operation. Contact our customer service team with the machine make and model to confirm the correct hardware needed to complete your rotary or pad driver order.

Cast Aluminum Clutch Plate: Aluminum plates resist cleaning chemicals. Recommended for scarifying and high torque / high shock jobs. Plates mount over a 5" center hole in the brush block.

92 Style "B" (Universal) **651005**



651005



650405

High-Density Plastic Clutch Plates: Plastic plates flex to reduce vibration and compress to grab the buffer drive plug. Plates mount over a 5" center hole in the brush block.

92 Style "B" (Universal) **650405**
46 Style "D" **650105**
47 Style "C" **650205**
48 Style **652505**
83 Style "A" **650805**



650205



650805



650105

Lugs: Lugs are factory mounted and carefully positioned for easy mounting and vibration free use. Available in nylon or metal.

High-Density Nylon **651301**
Metal **651201**

Please note: Brushes with lugs are not returnable.



651301



652505



651201

Spring Locked Clip-On: For Factory-Cat, Tennant, and Windsor. High-density nylon plates with corrosion resistant springs.

Factory-Cat "8 Star" **652405**
Tennant® **651505**
Windsor® **652905**

Tennant may require a special molded block.

Windsor requires a special molded block, available in sizes 11, 12, 13, 15, 16, 19 only.



651505



652405



652905

Gimbal Style: High-density plates are built to fit Alto, Minuteman, and Clarke machines.

Alto & Clarke **651405**
Minuteman® **651708**



651405



651708

Risers: Bolts to the top of the brush block. Riser increases clearance between brush block and buffer apron.

1" Riser **680106**
1-1/4" Riser **680206**



680106

SOLUTION TANK

4 Gallon capacity tank features large fill opening, brass hardware, and multi-machine mount. Durable and damage resistant. Features a flow control valve which allows you to properly manage the amount of solution used during cleaning. Wide opening and gradation marks on the tank allow for easier fill and to prevent spills.

720304





Better Brush Products

2375 Button Gwinnett Drive, Suite 300

Doraville, GA 30340

770-446-2429 Office

770-446-2479 Fax

sales@betterbrushproducts.com

www.betterbrushproducts.com